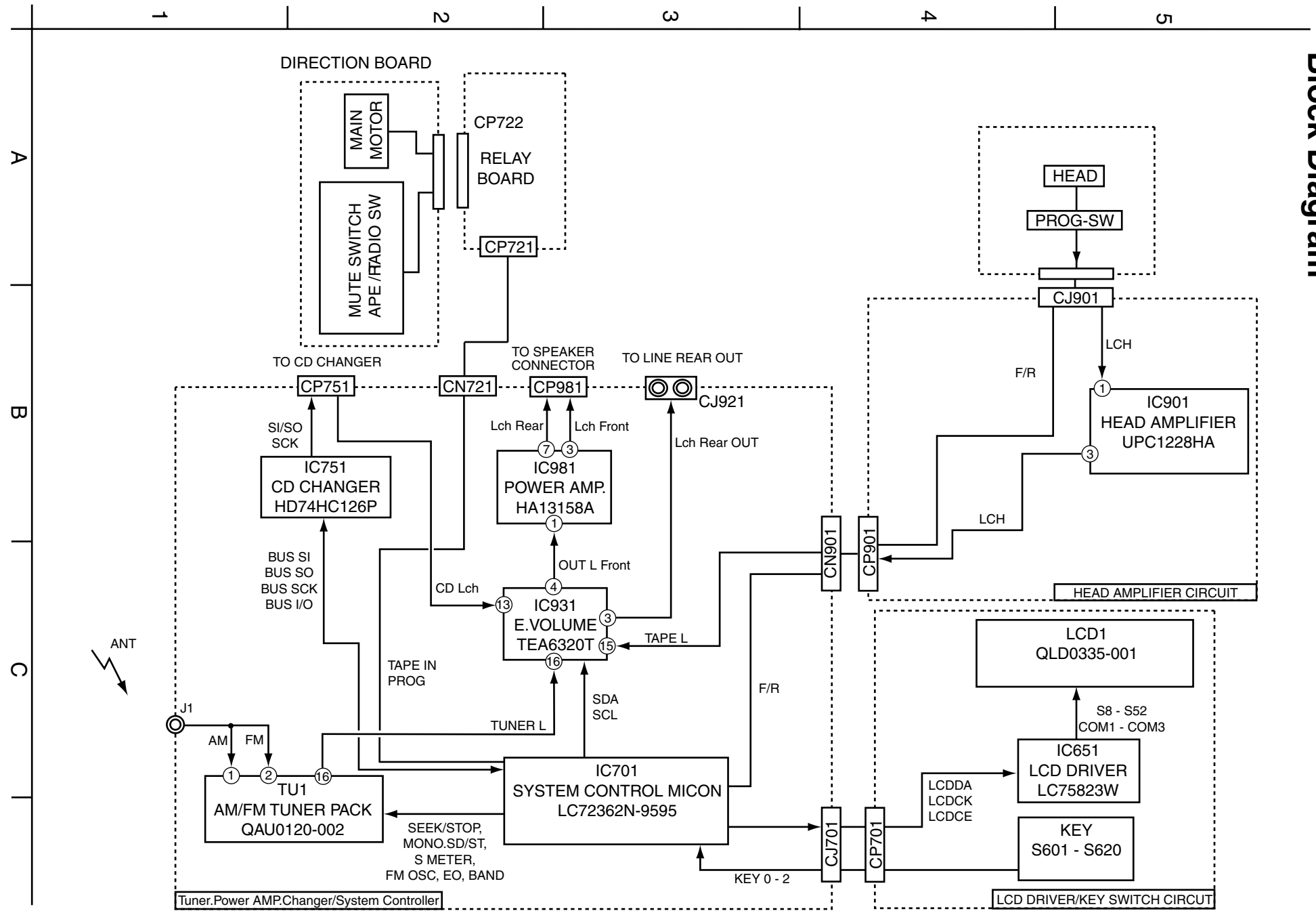


# Block Diagram



< MEMO >

# Standard schematic diagrams

## Receiver & System control circuit section

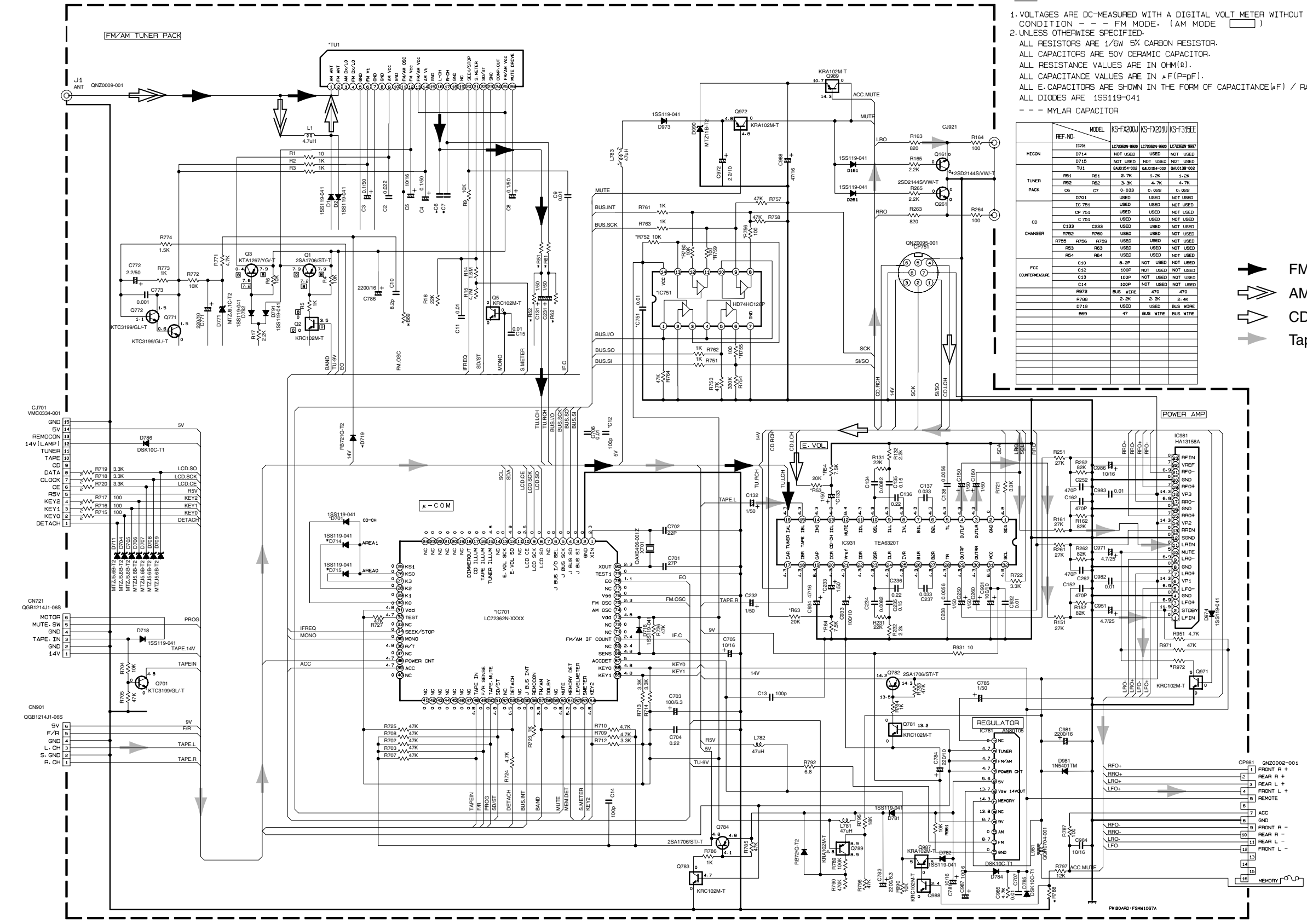
5

4

3

2

1



**NOTES**

- 1. VOLTAGES ARE DC-MEASURED WITH A DIGITAL VOLT METER WITHOUT INPUT SIGNAL. CONDITION:  FM MODE,  (AM MODE)
- 2. UNLESS OTHERWISE SPECIFIED:  
 ALL RESISTORS ARE 1/6W 5% CARBON RESISTOR.  
 ALL CAPACITORS ARE 50V CERAMIC CAPACITOR.  
 ALL RESISTANCE VALUES ARE IN OHM(Ω).  
 ALL CAPACITANCE VALUES ARE IN μF(P=pF).  
 ALL E-CAPACITORS ARE SHOWN IN THE FORM OF CAPACITANCE(μF) / RATED VOLTAGE(V).  
 ALL DIODES ARE 1SS119-041  
 --- MYLAR CAPACITOR

REF. NO.	MODEL	KS-FX200	KS-FX201U	KS-F31EE
<b>IC981</b>				
D714	NOT USED	USED	NOT USED	
D715	NOT USED	NOT USED	NOT USED	
<b>TUNER PACK</b>				
R61	R61	2.7K	1.2K	1.2K
R62	R62	3.3K	4.7K	4.7K
C6	C7	0.033	0.022	0.022
D701	USED	USED	NOT USED	
IC781	USED	USED	NOT USED	
CP781	USED	USED	NOT USED	
C781	USED	USED	NOT USED	
<b>CD CHANGER</b>				
C133	C233	USED	USED	NOT USED
R782	R782	USED	USED	NOT USED
R783	R783	USED	USED	NOT USED
R83	R83	USED	USED	NOT USED
R84	R84	USED	USED	NOT USED
<b>FCC COUNTERMEASURE</b>				
C10	8.2P	NOT USED	NOT USED	
C12	100P	NOT USED	NOT USED	
C13	100P	NOT USED	NOT USED	
C14	100P	NOT USED	NOT USED	
R972	BUS WIRE	470	470	
R788	2.2K	2.2K	2.4K	
D719	USED	USED	BUS WIRE	
R69	47	BUS WIRE	BUS WIRE	

- FM Radio signal
- AM Radio signal
- CD signal
- Tape PB/Main signal

NOTE: 1. C:\jcs\3161ma.001  
 KS-FX200\KS-F31EE\KS-FX201\USERIES  
 FSDH3161-006AW 1/3

■ Head amplifier circuit section

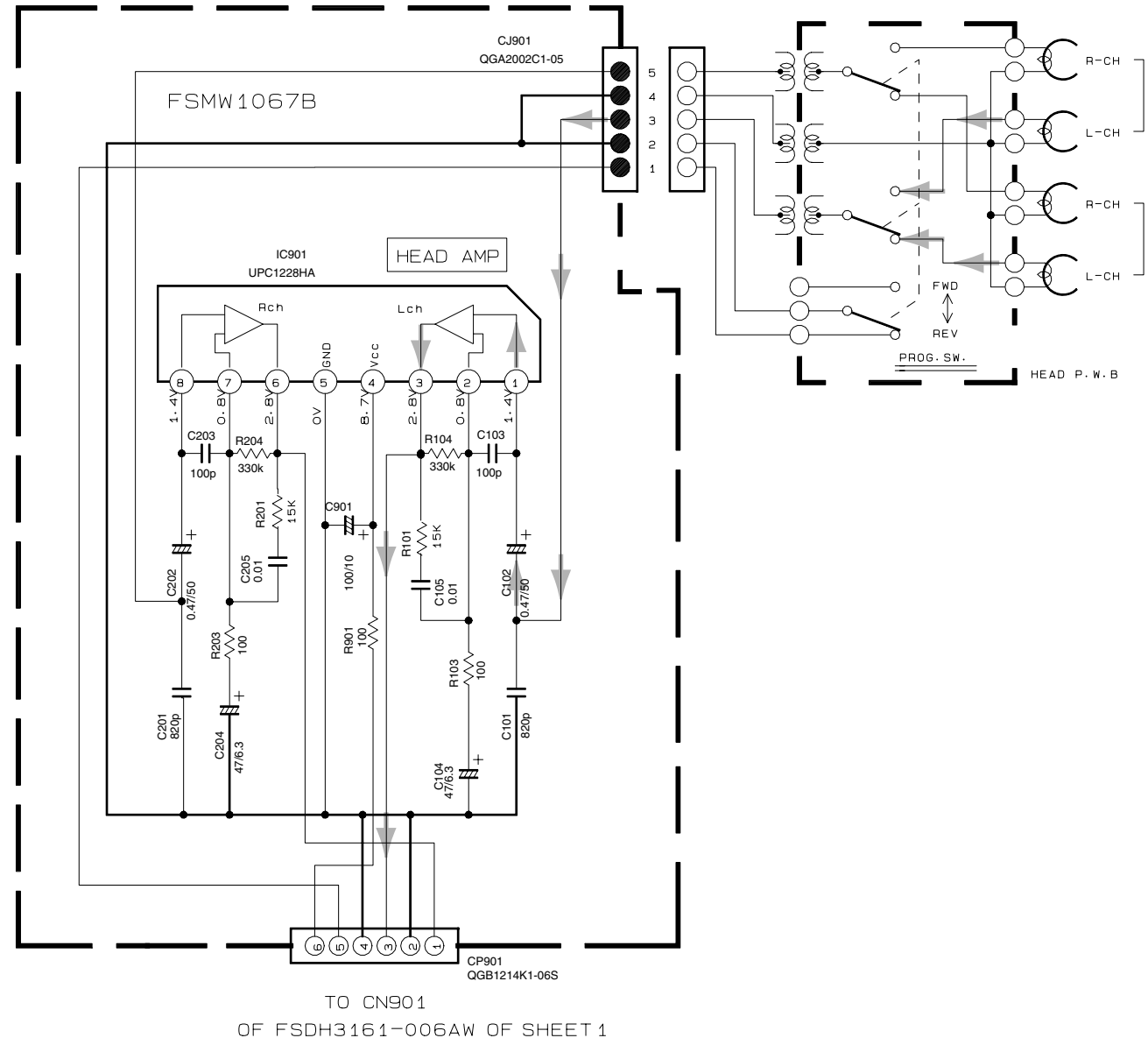
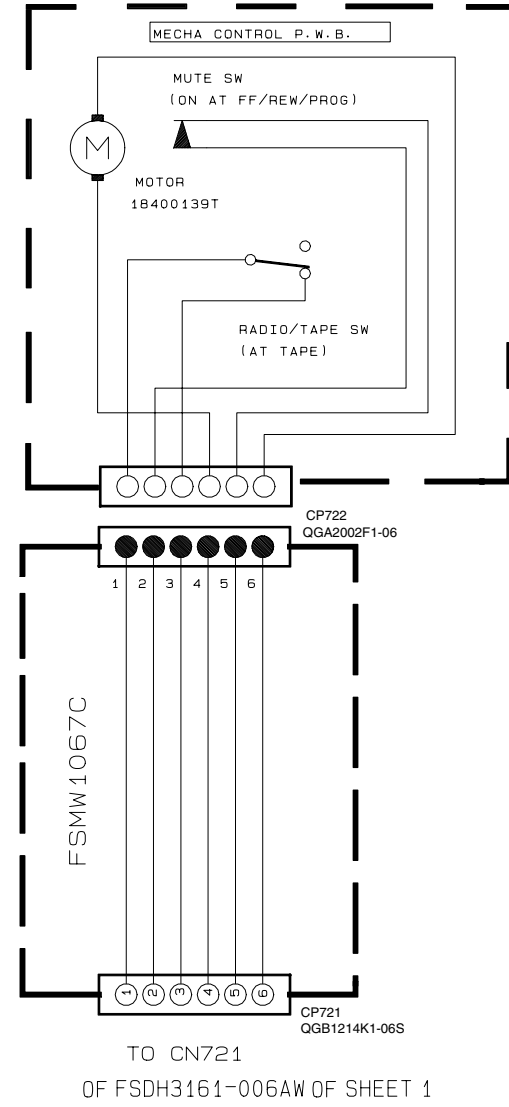
5

4

3

2

1

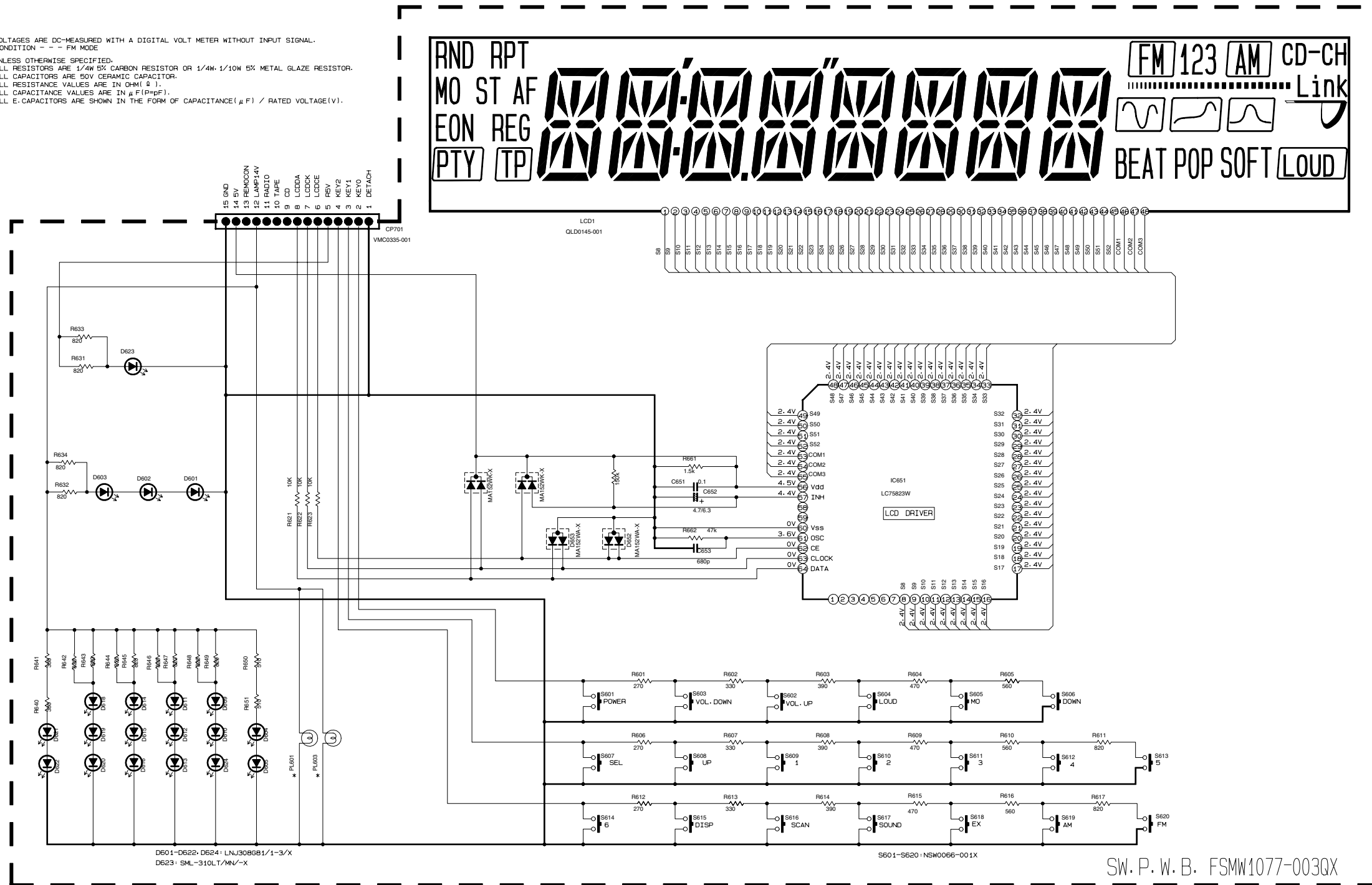


➔ Tape PB/Main signal

■ LCD driver & Operation switch circuit section

NOTES

1. VOLTAGES ARE DC-MEASURED WITH A DIGITAL VOLT METER WITHOUT INPUT SIGNAL. CONDITION - - - FM MODE
2. UNLESS OTHERWISE SPECIFIED:  
 ALL RESISTORS ARE 1/4W 5% CARBON RESISTOR OR 1/4W-1/10W 5% METAL GLAZE RESISTOR.  
 ALL CAPACITORS ARE 50V CERAMIC CAPACITOR.  
 ALL RESISTANCE VALUES ARE IN OHM(Ω).  
 ALL CAPACITANCE VALUES ARE IN μF(μF).  
 ALL E-CAPACITORS ARE SHOWN IN THE FORM OF CAPACITANCE(μF) / RATED VOLTAGE(V).



SW. P. W. B. FSMW1077-003QX

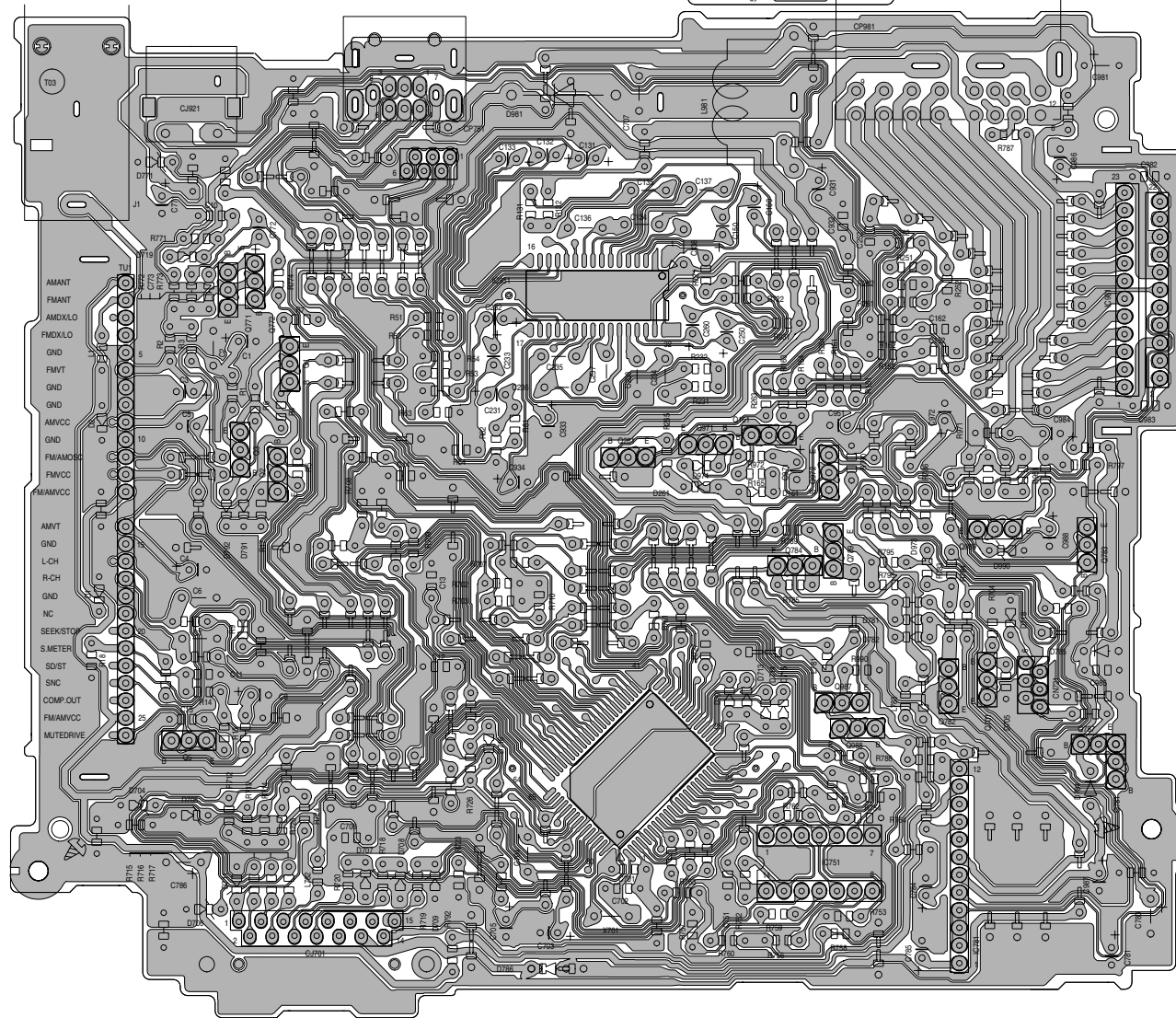
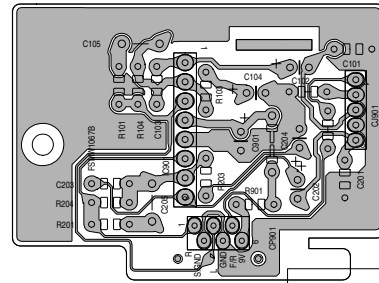
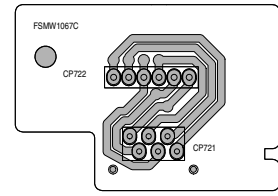
Version	KS-FX200J/F315EE	KS-FX201U SERIES	MODEL NAME	SWITCH-BOARD
Ref No.	QLL0070-001	QLL0092-001	KS-FX200J/F315EE	KS-SWPCB-6
			KS-FX201U SERIES	KS-SWPCB-7

NOTE/S/C/rev/3211sw.001  
 KS-FX200J/201U SERIES KS-F315EE  
 FSDHG161-006 3/3

Printed circuit board

■ Main boards

5  
4  
3  
2  
1



NOTE:KS-FX200J FSMW1067-0203  
/d2/c/jees/1067ma/1067mo

A | B | C | 2-6 | D | E | F | G | H

■ LCD Driver & Operation switch board

